

visit us: www.guptahardwares.com

Gupta[®]
DELUXE

Manufacturers & Suppliers of: All Kinds of Hardware Goods



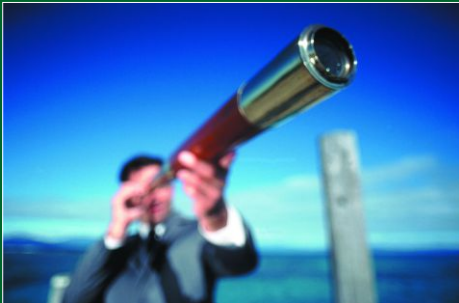
Zula Items
Towel Rods
Towel Rings
Hydraulic Aldrops
Wall Hangers
General Hardwares

Quality is not
Expensive
Quality is Priceless

G
GROUP
ESTD. 1972



Our Mission



GUPTA ENGINEERING WORKS has always made enormous efforts to further upgrade its existing technology, constantly assimilating and absorbing the latest trend in international technology, to meet growing consumer demands of domestic and international customers.

Our Vision

Our main vision is to delight our customers by offering innovative quality products at prices that make the economics work. Over the years, we have kept quality as our forte. We are aimed at delivering superior quality products to satisfy a wide clients base. In order to achieve our goal and excel in the industry, We have streamlined our production processes towards up gradation of our product range.



**SUCCESS is a JOURNEY.
NOT a DESTINATION**

Journey To Excellence

Excellence is earned through hard work and dedication to manufacture world class quality product. At **GUPTA ENGINEERING WORKS** we live by these words everyday.

We have been committed to manufacture best Quality Products. This ongoing commitment doesn't stop with the manufacturing process itself. We strongly believe that the real attributes of a great company are to treat every customer with utmost respect and satisfy their every need the first time and every time. Our Customers appreciate this dedication to Total Customer Satisfaction and have rewarded us with long term Relationships.

To build long term relationships, one has to gain respect in the eyes of its customer. Most of the respect we have attained comes from our long term commitment to quality & services.

This dedication has allowed us to deliver the high quality products on timely basis and at a competitive price. This journey doesn't end here, we will continue to search for a new ways to improve, to deliver high quality products to our reputed / valued customers and most importantly, maintain the high ethics in our pursuit of Excellence.



Infrastructure Support

Our Infrastructure Machinery/Equipment for R&D

We "GUPTA ENGINEERING WORKS" have established a state-of-the-art infrastructure, spread across a wide area of 14,000 sq.ft. The entire unit is divided into various departments to offer tailored products as per clients' specifications. We have a manufacturing unit, well equipped with all the latest machines and equipments, which assist us in manufacturing these hardware goods without any difficulty and damage. We constantly upgrade our technical systems, keeping in mind the changing market requirements and trends. With the support of our technical experts, we ensure effective production and maximum utilization of resources.



A friendly team who create best quality
HARDWARE GOODS for our clients.

ABOUT
US

Company Profile

GUPTA ENGINEERING WORKS is professionally managed and well-established company, which deals in export of various type of General Hardware Since 1972. The company encompasses exceptional ability and outstanding strength in fulfilling the growing demands of local & international buyers.

We strive hard to maintain the quality of the products we manufacture and export so proudly to the world market. The application of stringent quality measures makes our components' working capability incomparable and also lessens the maintenance requirements.

Based in the Industrial Heart Of India (MALERKOTLA) GUPTA ENGINEERING WORKS has acquired a leading position in manufacturing quality hardware goods of all sizes suitable for various applications.

Our quality control is at the best wherein each & every piece undergoes stringent quality control before being dispatched procedure Clients ultimate satisfaction is our motto and in true sense we believe in delivering quality products with prompt action at all times.



Quality Assurance

By adopting total quality management approach we have been able to win accolades of our wide clientele. Our procured products undergo thorough checks on different parameters before being offered to the customers. Our team of quality experts conducts routine inspections so that each lot of products is free from any flaws. These products conform to the international standard and we make sure that the quality of our products is maintained in the warehouse and till final shipment.

Why Us

The various factors giving us an edge over other competitors is :

- Exemplary designs
- Skilled professionals
- Stringent quality checks
- Ethical business practices
- Prompt delivery

Our Team

Our team includes experienced professionals, having in depth knowledge of the industry. With the assistance of these qualified professionals, we are able to manufacture and supply a high quality range of General Hardware Goods. Our team is internally segregated in various departments to ensure smooth and efficient functioning of the organization. These experts work in coordination with each other and practice hard to offer every possible service in accordance with the requirements of our clients. Our team is always ahead to enhance the prestige of the organization and add reputed names in our list of clients.

Our team comprises following experts:

- Researchers & Technicians
- Quality Controllers
- Ware House Personnel
- Sales and Marketing Personnel
- Dealers & Agents



Product Range



Plain Wall Hangers

Single Hook Lite Wall Hangers (H.R)



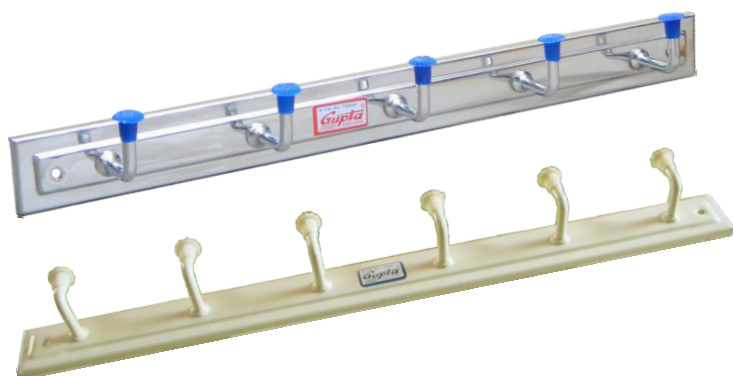
Sizes Available:

3 Pins, 4 Pins, 5 Pins, 6 Pins, 7 Pins,
8 Pins are available in stock

Colors Available :



Single Hook Deluxe Regular Heavy Wall Hangers



Sizes Available:

3 Pins, 4 Pins, 5 Pins, 6 Pins, 7 Pins,
8 Pins are available in stock

Colors Available :



Double Hook Deluxe Regular Heavy Wall Hangers



Sizes Available:

3 Pins, 4 Pins, 5 Pins, 6 Pins, 7 Pins,
8 Pins are available in stock

Colors Available :



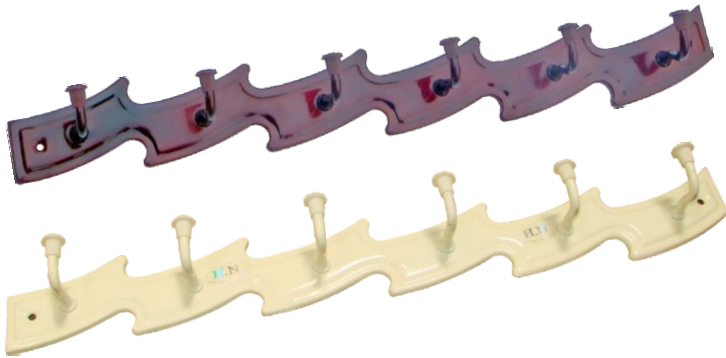


Product Range



Fancy Wall Hangers

Yo Hangers



Sizes Available:

Only 6 Pins & 8 Pins
are available in stock

Colors Available :



Snake Hangers



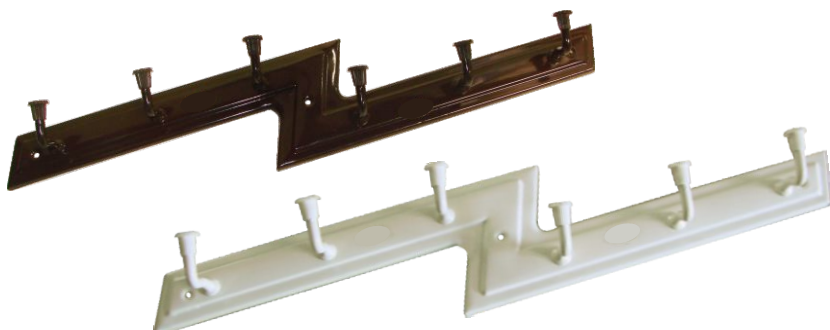
Sizes Available:

Only 6 Pins & 8 Pins
are available in stock

Colors Available :



Crazy Hangers



Sizes Available:

Only 6 Pins & 8 Pins
are available in stock

Colors Available :





Product Range



Towel Rods & Rings

Towel Rods (Powder Coated)



Sizes Available:

12", 18", 24", 30", 36" are available in stock

Colors Available :



Towel Rings

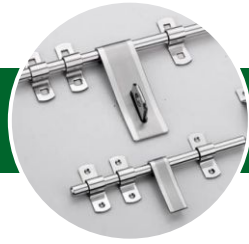


Sizes Available:

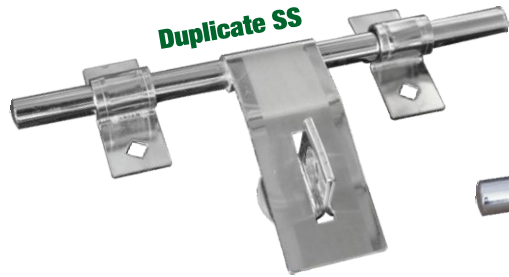
Only Triangular and Round Shapes

Colors Available :

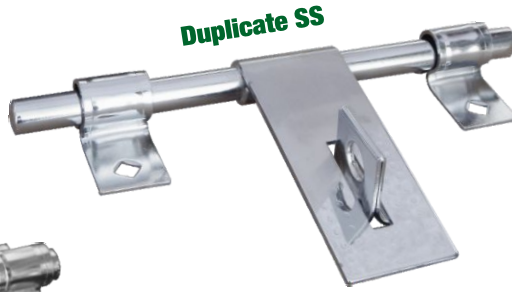




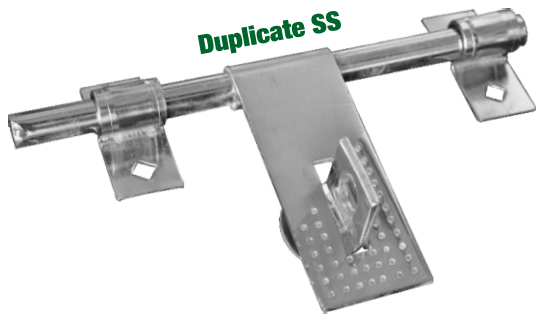
Product Range



Duplicate SS



Duplicate SS



Duplicate SS

Sizes Available:

9mm, 11mm, 12mm, 13mm,
14mm, 15mm, 16mm are available in stock

All Type of Aldrops



Plain Deluxe



Hydraulic



Plain Deluxe



Plain Deluxe

Product Range



Gate Hooks



CP

CP

SS

SS

Gate Hooks



Sizes Available:

2", 2.5", 3", 4", 5", 6", 8", 10", 12"
(Round & Square) CP & PC
finishing are available in stock



Product Range



Zula Items (CP & SS)

Regular Bearing Kada



(Golden)

Sizes: Light, Heavy & Special in Golden Available in Stock

Dops & Twisted Bearing Kada



Sizes: Light or Heavy Available in Stock

S Hooks



Sizes: 2", 3", 4", Jambo available in stock

Swing Set



Sizes: Round & Square Available in Stock

Zula Rod



SS

SS

Sizes: Plain & fancy 10" & 12" Available in Stock

Zula Chain



Sizes: Light, Medium, Heavy Available in Stock



Product Range



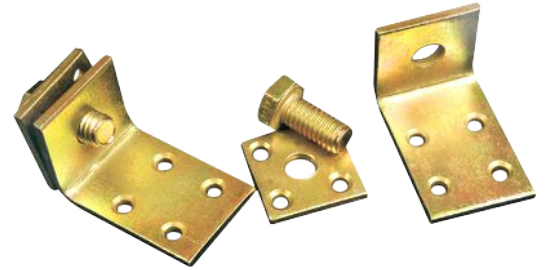
General Hardware

T-Hinges



Sizes: 4", 6", 8", 10", 12", 14", 16", 18"
Only 12 Gauge Available in Stock

Bed Sockets



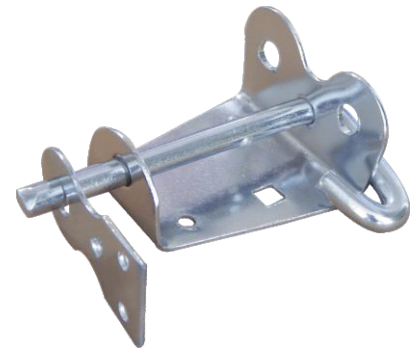
Sizes: Light, Medium & Heavy
Available in Stock

Brass Handle Scissors



Sizes: 8", 9", 10", 12" Available in Stock

Locking Bolt



Sizes: Light, Medium & Heavy Available in Stock

Latches (Fancy)



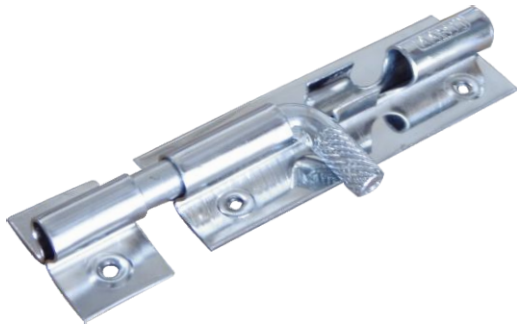


Product Range



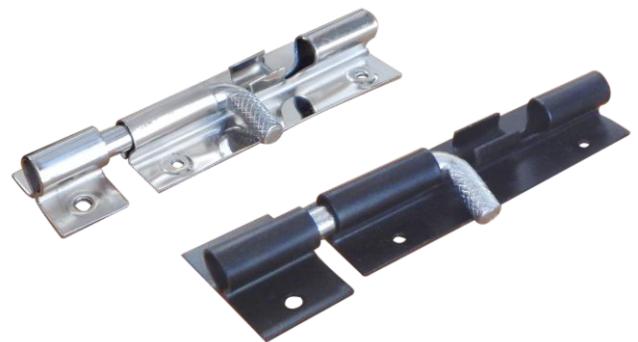
General Hardware

Tower Bolt (One Pcs)



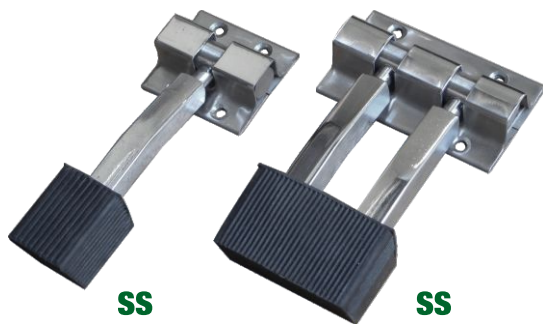
Sizes: 3", 4", 5", 6", 8" (Heavy)
Available in Stock

Tower Bolt (One Pcs)



Sizes: 3", 4", 5", 6", 8" (Light or Medium)
Available in Stock

Stopper



Sizes: Single & Double Design (SS) Available in Stock

Safety Pad Lock



Sizes: 2", 2.5", 3", 4" Available in Stock

Door Handles

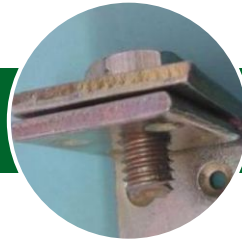


Sizes: Plain & Hydraulic Designs Available in Stock

Pipe Bracket



Sizes: 3/4" & 1" Straight Bend
Available in Stock



Product Range



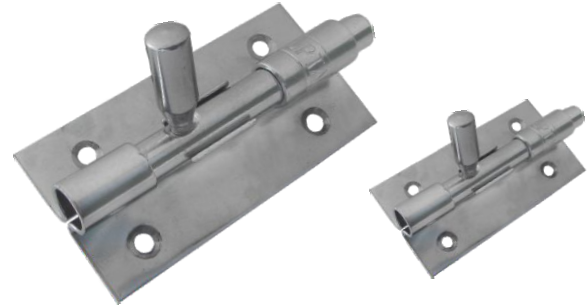
General Hardware

Zula Spring



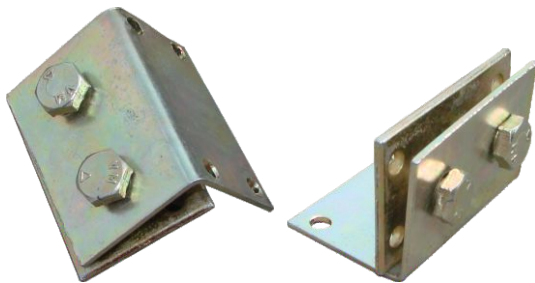
Sizes: 10" Available in Stock

Tower Bolt (Two Pcs)



Sizes: 3", 4", 5", 6", 8"
(Light, Medium & Heavy) Available in Stock

Double Bolt



Sizes: Light & Heavy Available in Stock

Oil Karahi



Sizes: All Sizes Available in Stock

Stopper



Sizes: Single & Double Designs Available in Stock

Gurmala & Karni



Sizes: PVC & Wooden Handle
Available in Stock



Designed By CataPrints: +91 95690 61234

GUPTA ENGG. WORKS
GUPTA TRADING CO.

Green Avenue, Near New Grain Market,
Malerkotla 148023, (Pb.)
Mobile: +91-98550-60458, 70095-12530
62809-88862, 94782-09009, 72200-00221

Email:
sachin.kansal2000@gmail.com,
Visit us: guptahardwares.com